

AMS

www.ams-fa.com

LEADER OF NEW INNOVATION INSERTION MACHINE

Through Hole Technology for the Satisfaction of Customer's Needs

AMS

ADVANCED MECHATRONICS SOLUTIONS, INC

☎ +1 619-661-5985 ☎ +1 619-661-5995 ✉ ams@ams-fa.com

To view additional products.. www.ams-fa.com



AMS, INC.

10030 Via de la Amistad, San Diego, CA 92154
T: +1 (619) 661-5985 F: +1 (619) 661-5995 E: ams@ams-fa.com

AMS Dynamics, Inc.

2979 Pacific Drive Suite A Norcross, GA 30071
T: +1 (770) 864-5394 F: +1 (678) 691-1847 E: infoATL@ams-fa.com

AMS do BRASIL

Rua Laerte de Paiva, 344, Bairro Macuco, Valinhos -SP-CEP 13279.451
T: +55 (19) 3849-5555 E: quote@ams-fa.com



MULSERTER 2000T
Insert Machine Terminal

MULSERTER 2000M
Insert Machine Fuse

MULSERTER 2100X
Insert Machine Odd form

MULSERTER 500J
Insert Machine Pin

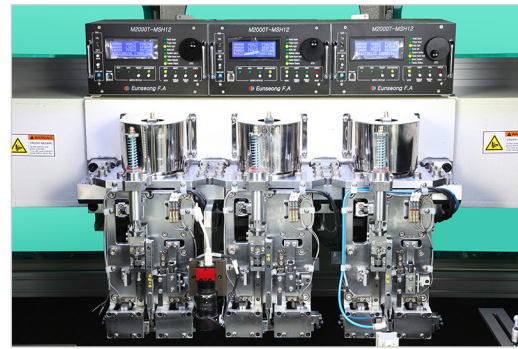
Made by EUN SEONG Korea



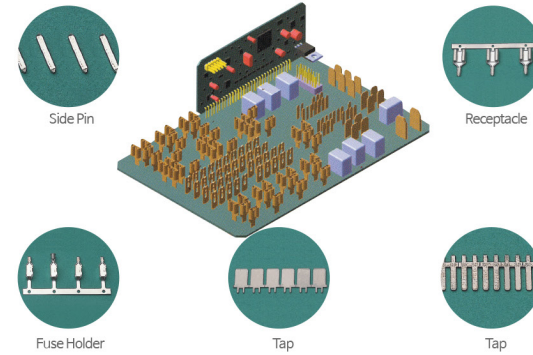
MAIN SPECIFICATIONS

Specification	Mulserter 2000T
PCB Size	Min. 80 x 50 / Max. 330 x 250 mm
Insertion Speed	0.23 sec ~ 0.65 / point
Insertion Head Applicable	3 Type of Head
Feeding system	Reel Feeding (Tip /shoulder Carry)
Weight	Max. 1,500 kg
Utility	Power AC 220V 1ø, 4KW / Air 5~6kgf/cm ²
M/C Dimension (L,W,H)	1910 x 1408 x 1562 (mm)
Control	PC, Motion controller, Coordinates Calibration By Vision System
Noise	65~70db (depending on insertion speed)

INSERT HEAD



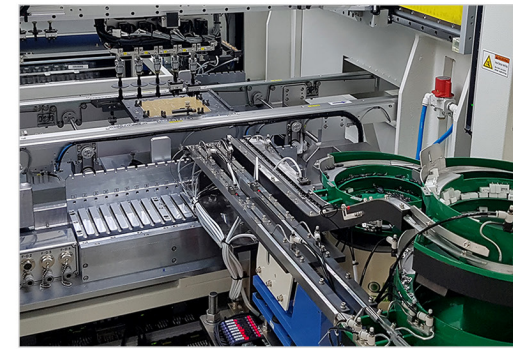
APPLICABLE PARTS



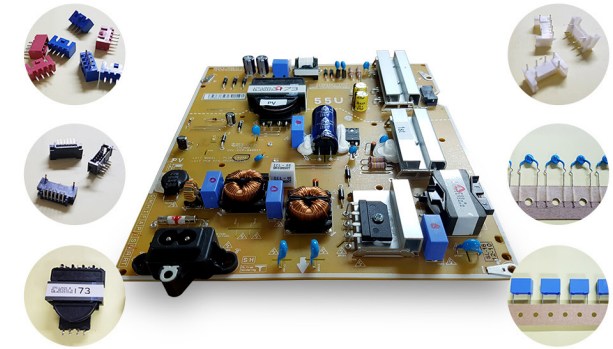
MAIN SPECIFICATIONS

Specification	Mulserter 2100X
PCB Size	Min. 100 x 80 / Max. 350 x 250 mm
Insertion Speed	2 sec / ea
Insertion Head Applicable	8 Type of Head
Feeding system	Bowl (Bulk), Tray, Stick, Reel Feeder
Weight	Max. 1,500 kg
Utility	Power AC 220V 1ø, 4KW / Air 5~6kgf/cm ²
M/C Dimension (L,W,H)	1410 x 2070 x 1570(mm)
Control	PC, Motion controller, Coordinates Calibration By Vision System

INSERT HEAD



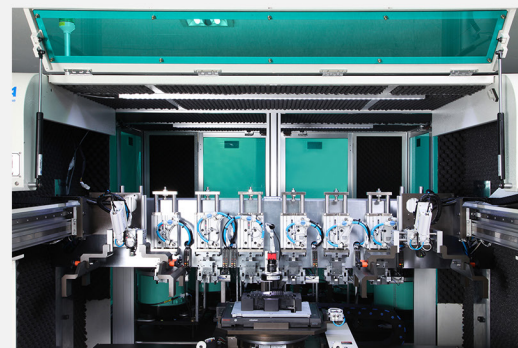
APPLICABLE PARTS



MAIN SPECIFICATIONS

Specification	Mulserter 2000M
J/Box Size	Min. 50 x 50 / Max. 250 x 250 mm
Insertion Speed	0.4 sec ~ 0.6 / point
Insertion Head Applicable	6 Type of Head
Feeding system	Bowl Feeder / Air Shooting
Weight	Max. 1,500 kg
Utility	Power AC 220V 1ø, 4KW / Air 5~6kgf/cm ²
M/C Dimension (L,W,H)	2260 x 2216 x 1762 (mm)
Control	PC, Motion controller, Coordinates Calibration By Vision System

INSERT HEAD



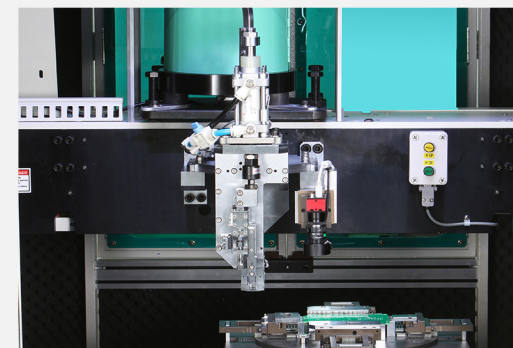
APPLICABLE PARTS



MAIN SPECIFICATIONS

Specification	Mulserter 500J
PCB Size	Max. 250 x 200 mm
Insertion Speed	0.25 sec / Point
Feeding system	Bowl(Bulk) Feeder
Weight	Max. 1,000 kg
Utility	Power AC 220V 1ø, 1.7KW / Air 5~6kgf/cm ²
M/C Dimension (L,W,H)	1380 x 1304 x 1800 (mm)
Control	PC, Motion controller, Coordinates Calibration By Vision System
Noise	65~70db (depending on insertion speed)

INSERT HEAD



APPLICABLE PARTS

