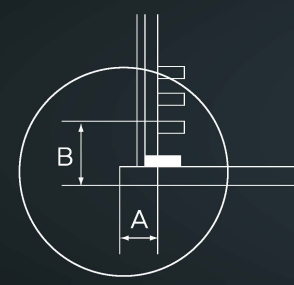
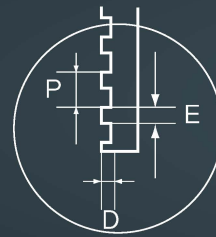




MAGAZINE-RACK



Reference position



Guide rail

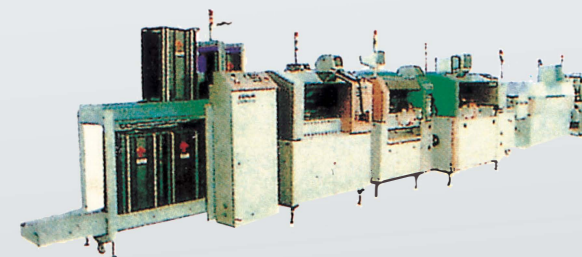
FOR THE USE

1. Accumulation and mobility in PCB automatic line.
2. Accumulation and mobility in PCB construction line.
3. Storage for PCB accessories completely organized.



MAGAZINE-RACK SPECIFICATION

MODEL NO	TEMP RANGE		W	L	H	AJ	A	B	C	D	E	P	WEIGHT Kg
	TYPE1	TYPE2											
AMS-091	60°C	150°C	320	355	580	50~258	34	35	330	3	3	10	4.8
AMS-092	60°C	150°C	320	355	570	50~258	34	35	330	3	3	10	4.8
AMS-093	60°C	150°C	460	535	575	60~380	34	35	535	4	5	10	7
AMS-094	60°C	150°C	370	350	570	98~308	34	35	330	3/5	3/5	10	5
AMS-095	60°C	150°C	380	480	575	77~318	34	35	480	3	5	10	7
AMS-096	60°C	150°C	400	460	575	68~334	34	35	460	3	5	10	7
AMS-097	60°C	150°C	320	355	570	50~258	34	35	330	5	5	10	6
AMS-098	~250°C		320	355	570	50~250	34	35	335	3	3	10	6
AMS-099	60°C	150°C	320	620	575	60~236	34	35	600	4	5	10	8.5
AMS-100	60°C	150°C	530	535	575	150~450	34	35	535	4	5	10	8.5
AMS-101	60°C	150°C	530	620	575	150~450	34	35	600	4	5	10	8.5



AMS US/HEADQUARTER
10030 Via de la Amistad, San Diego,
California 92154 Phone:+1 (619) 661-5985
Fax:+1 (619) 661-5995 ams@ams-fa.com

AMS BRAZIL
Rua Laerte de Paiva, 344 Bairro Macuco Valinhos-SP-
CEP 13279.451
Phone: +55 (19) 3849-5555 quote@ams-fa.com