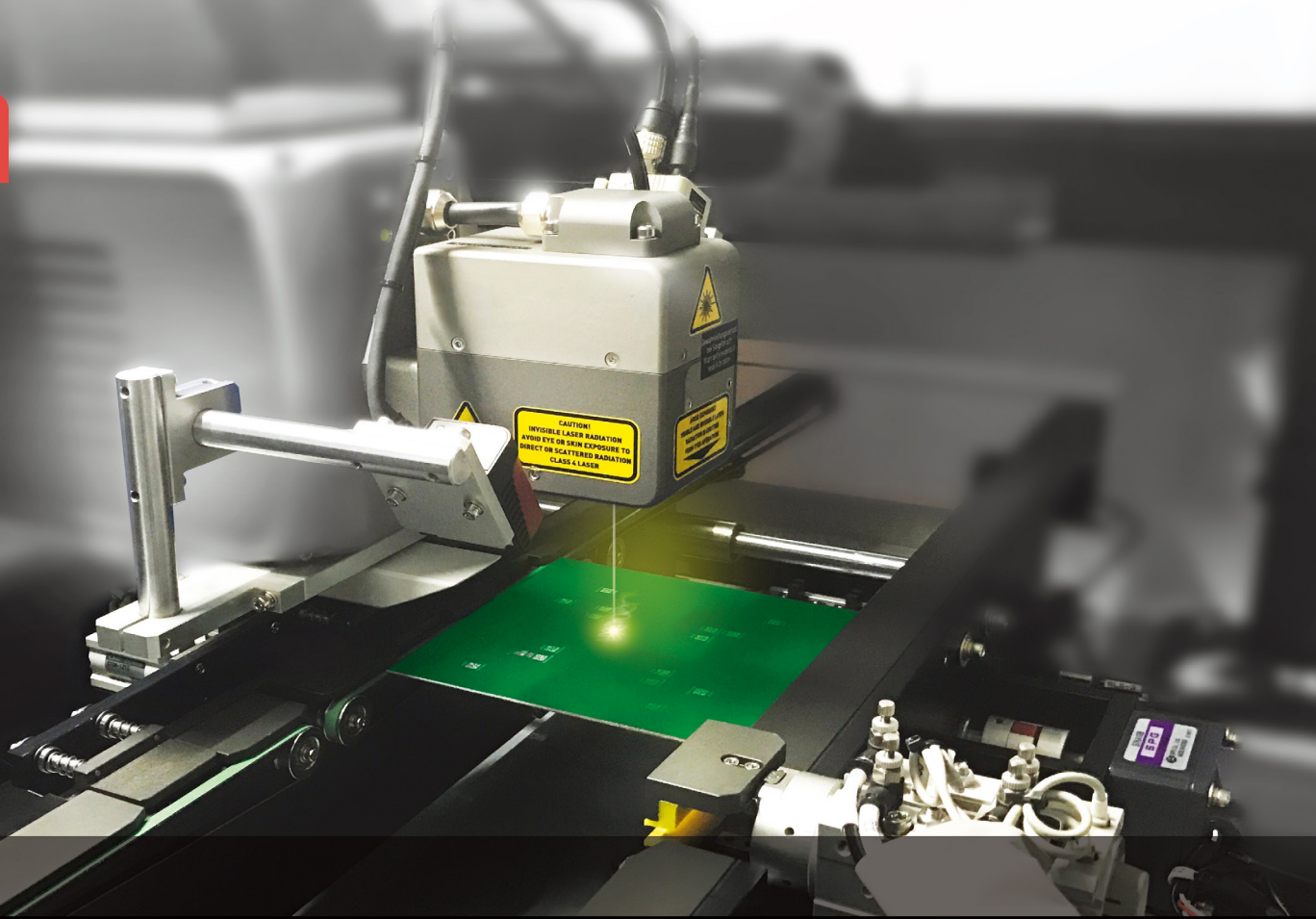


AMS



ALM10 Laser Marking Machine

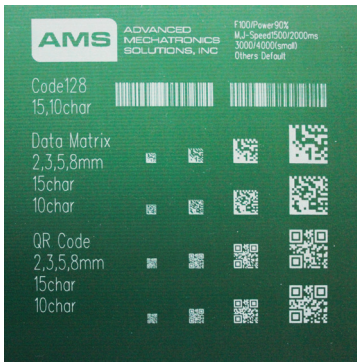
Advanced. Precise. Reliable.

Low maintenance, high-performance, air-cooled CO2 mounted to a PLC, HMI-controlled XYZ motion Laser Marking System with total solutions. Innovative features include Head Moving Motion Control and PCB Flipper.



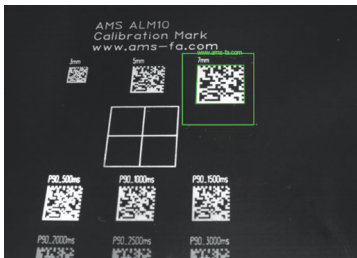
www.ams-fa.com

ALM10 FEATURES & BENEFITS



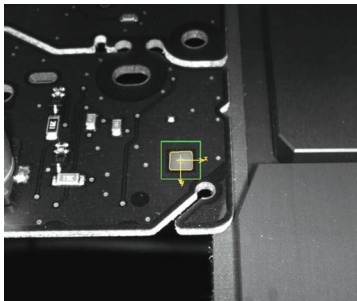
Laser Marking

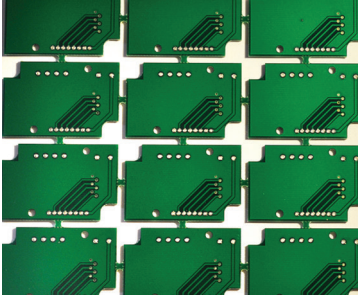
- > Text (24 font, Multi-Language)
- > LOGO (dxf, bmp)
- > Shape (Arc, Rectangle)
- > Variety Code (Bar, 2D)
Code 93, 128, DataMatrix, QR-code, EAN, PDF 417, etc.
- > Reliable brand Laser (Domino)



Vision Scanner

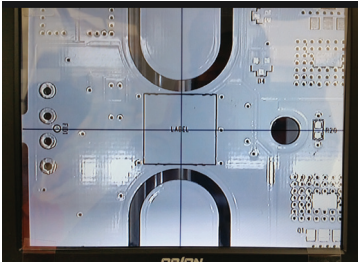
- > Scan and Decode a barcode or 2D symbol and compare with marking data
- > Checking the registered fiducial mark on the loading position before marking





Array PCB Marking

- > Max 1000 arrayed PCB
- > 9 teaching point per PCB
- > 4 direction array marking (NW , NE, SW, SE)



Easy Teaching

- > With Teaching Camera or Aim Pointer
- > Teach only Start, End point
- > Able to modify position data on the screen
- > Position offset



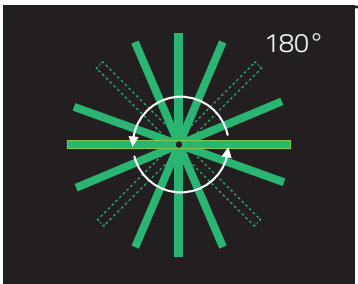
Mobile Monitoring

- > Monitor scan data on mobile device via machine WIFI connection



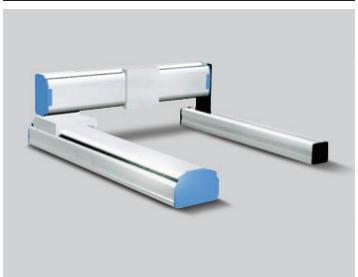
Multi-Device Via WIFI

- > Transfer mark, scan data to server (PC)
- > Receive operation command from server



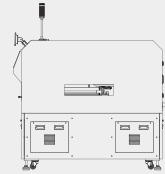
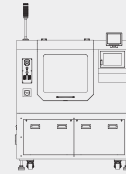
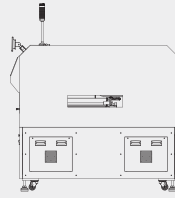
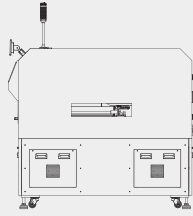
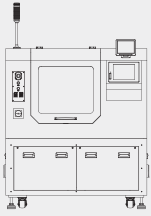
PCB Flipper

- > Integrated PCB Flipper
- > Front & back single cycle marking



Head Moving Motion Control

- > Gantry robot system
- > Auto width adjustment system



ALM10H-L

Dimension & Weight	1400 * 1750 * 1560 mm / 1000kg
PCB Size(mm)	Max 610 * 510 / Min 80 * 50 (PCB Edge Clearance = 3mm)

ALM10H-M

Dimension & Weight	1200 * 1600 * 1560 mm / 800kg
PCB Size(mm)	Max 450 * 350 / Min 80 * 50 (PCB Edge Clearance = 3mm)

ALM10H-S

Dimension & Weight	1010 * 1590 * 1560 mm / 700kg
PCB Size(mm)	Max 330 * 250 / Min 50 * 50 (PCB Edge Clearance = 3mm)

TECHNICAL DATA: AMS ALM10

Laser Life (MTBF)	30,000 Hours
Laser Type	CO2-10W
Character per Second	800
Marking Field Min. (mm)	68x68
Marking Field Max. (mm)	136x136
Max. PCB (LxW)(mm)	600x500 or 450x350 or 330x250
Min.PCB(mm)	50x50
Dimension (LxWxH)(mm)	1420x1750x1610 or 1420x1590x1600 or 1010x1590x1560
Weight (kg)	800
Repeatability (um)	+/-25
Power Supply	230 VAC, 50~60Hz, 1.8KW/8A
Cooling	Air-Cooled (Internal Cooling Cycle)
Interface	SMEMA
Transfer Direction	Left to Right, Right to Left (Pass-Back)
Required Accessories	Fume Extractor

AMS, INC.

📍 10030 Via de la Amistad, San Diego, CA 92154 📞 +1 (619) 661-5985 📠 +1 (619) 661-5995 ✉️ ams@ams-fa.com

AMS Dynamics, Inc.

📍 2979 Pacific Drive Suite A Norcross, GA 30071 📞 +1 (770) 864-5394 📠 +1 (678) 691-1847 ✉️ infoATL@ams-fa.com

AMS do BRASIL

📍 Rua Laerte de Paiva, 344 Bairro Macuco Valinhos-SP-CEP 13279.451 📞 +55 (19) 3849-5555 ✉️ quote@ams-fa.com